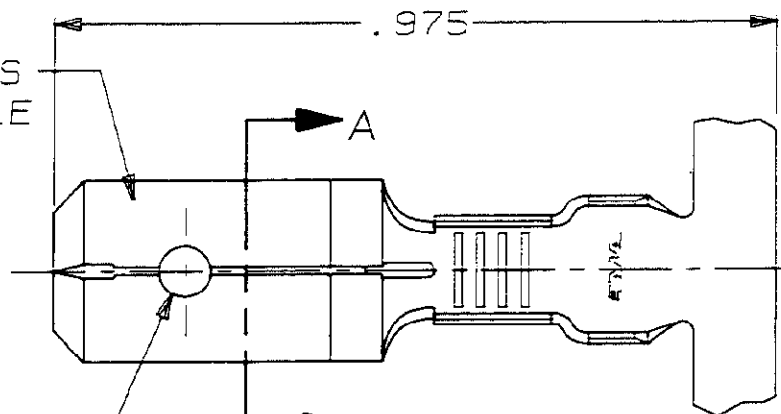


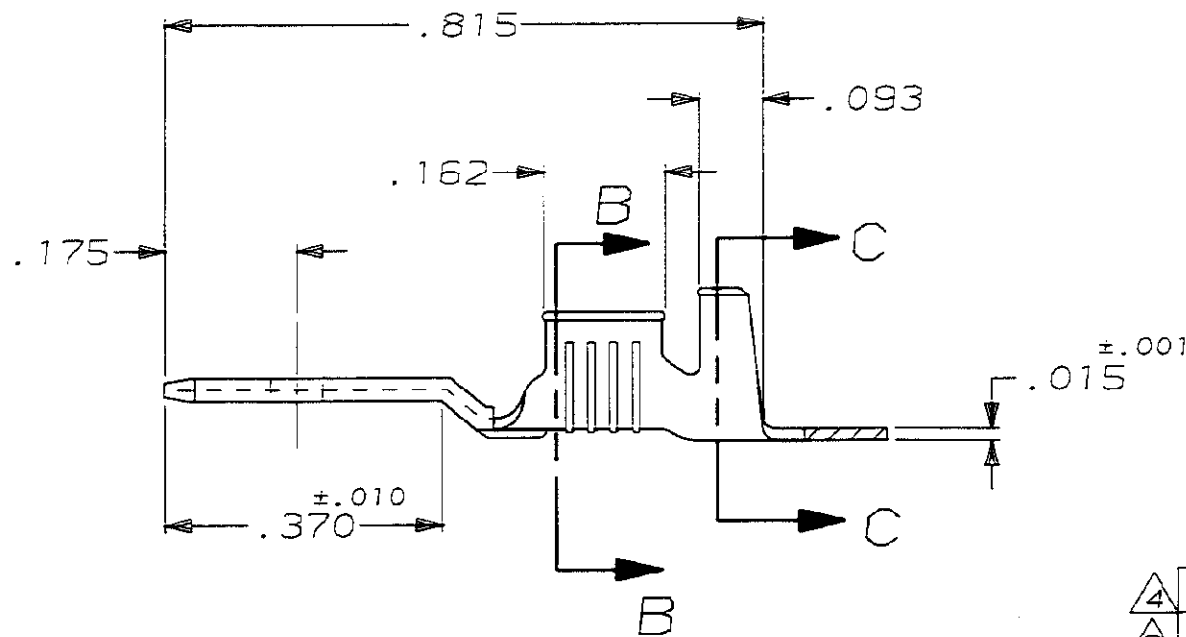
THIS DRAWING IS UNPUBLISHED. RELEASED FOR PUBLICATION
 © COPYRIGHT 19 BY AMP INCORPORATED. ALL INTERNATIONAL RIGHTS RESERVED.

LOC	DIST	P	F	ZONE	LTR	REVISIONS	DATE	APPD
AF	50					6 REDRAWN AF-7183	1/31/91	JR/MF

FITS .250 SERIES FASTON RECEPTACLE



.075
.060 DIA HOLE



SECTION A-A
SCALE 5:1

SECTION B-B
SCALE 5:1

SECTION C-C
SCALE 5:1

- 1 CONTINUOUS STRIP ON REELS.
- 2 FEED TO BE .540±.005.
- 3 REVERSED REEL OF 42475-1.
- 4 REVERSED REEL OF 42475-2.
- 5 FOREIGN PRODUCTION ONLY.

FINISH	INSULATION RANGE	WIRE SIZE	PART NO
TIN .000080 MIN	.080-.120 DIA	22-18 AWG	42475-4
-			42475-3
TIN .000080 MIN			42475-2
-			42475-1

DO NOT SCALE PRINT. UNLESS SPECIFIED DIMENSIONS ARE IN INCHES. TOLERANCES ON: 2 PLC DEC ± - 3 PLC DEC ± .015 ANGLES ± -	DR 1/31/91 JR RUTH	AMP AMP Incorporated Harrisburg, PA 17105-3608		
	CHK 1/31/91 MS FEHER			
	MATERIAL #2H BRASS	APPD 1/31/91 C MEYERS	NAME TAB, FASTON™ .250 SERIES	
	FINISH SEE TABLE	APPD 1/31/91 D REINER		
	PRODUCT SPEC -	SIZE B	CAGE CODE 00779	DRAWING NO 42475
	APPLICATION SPEC -	WEIGHT -	SCALE 4:1	SHEET 1 OF 1